

Anti-Chicken IgG (H&L) Secondary Antibody
Rabbit Polyclonal, Unconjugated
Catalog # ASR3329**Specification**

Anti-Chicken IgG (H&L) Secondary Antibody - Product Information

Description	Anti-CHICKEN IgG (H&L) (RABBIT) Antibody
Host	Rabbit
Conjugate	Unconjugated
Target Species	Chicken
Reactivity	Chicken
Clonality	Polyclonal
Application	WB, E, IC
Application Note	ELISA 1:1,000,000;Western Blot 1:20,000-1:100,000;Immunochemistry 1:1,000-1:5,000
Physical State	Liquid (sterile filtered)
Host Isotype	IgG
Target Isotype	IgG (H&L)
Buffer	0.02 M Potassium Phosphate, 0.15 M Sodium Chloride, pH 7.2
Immunogen	Anti-Chicken IgG (H&L) was produced by repeated immunization with Chicken IgG whole molecule in rabbit.
Stabilizer	None
Preservative	0.01% (w/v) Sodium Azide

Anti-Chicken IgG (H&L) Secondary Antibody - Additional Information**Shipping Condition**

Wet Ice

Purity

This product was prepared from monospecific antiserum by immunoaffinity chromatography using Chicken IgG coupled to agarose beads. Assay by immunoelectrophoresis resulted in a single precipitin arc against anti-Rabbit Serum and Chicken IgG. Some light chain cross reactivity may be observed against chicken immunoglobulins.

Storage Condition

Store vial at 4° C prior to opening. This product is stable at 4° C as an undiluted liquid. Dilute only prior to immediate use. For extended storage, aliquot contents and freeze at -20° C or below. Avoid cycles of freezing and thawing.

Precautions Note

This product is for research use only and is not intended for therapeutic or diagnostic applications.

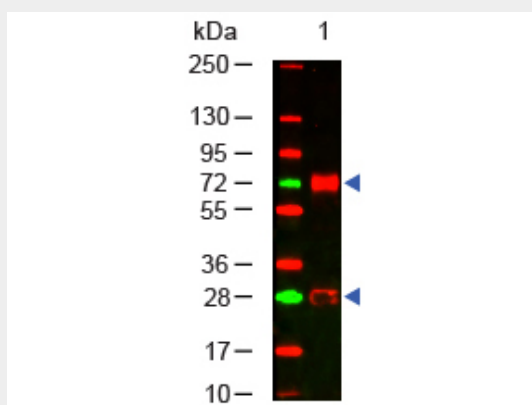
Anti-Chicken IgG (H&L) Secondary Antibody - Protein Information

Anti-Chicken IgG (H&L) Secondary Antibody - Protocols

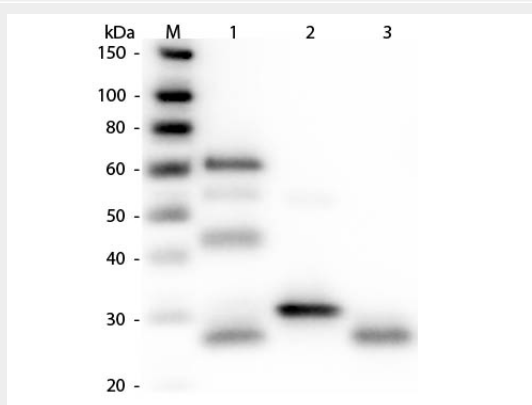
Provided below are standard protocols that you may find useful for product applications.

- [Western Blot](#)
- [Blocking Peptides](#)
- [Dot Blot](#)
- [Immunohistochemistry](#)
- [Immunofluorescence](#)
- [Immunoprecipitation](#)
- [Flow Cytometry](#)
- [Cell Culture](#)

Anti-Chicken IgG (H&L) Secondary Antibody - Images



Western Blot of Rabbit anti-Chicken IgG Antibody. Lane 1: Chicken IgG. Lane 2: None. Load: 100 ng per lane. Primary antibody: Chicken IgG antibody at 1:1000 for overnight at 4°C. Secondary antibody: DyLight™ 649 rabbit secondary antibody at 1:20,000 for 30 min at RT. Block: 5% BLOTTO 30 min at RT. Predicted/Observed size: 72 and 28 kDa, 72 and 28 kDa for Chicken IgG. Other band(s): none.



Western Blot of Anti-Chicken IgG (H&L) (RABBIT) Antibody . Lane M: 3 µl Molecular Ladder. Lane 1: Chicken IgG whole molecule . Lane 2: Chicken IgG F(c) Fragment . Lane 3: Chicken IgG F(ab) Fragment . All samples were reduced. Load: 50 ng per lane. Block: MB-070 for 30 min at RT. Primary Antibody: Anti-Chicken IgG (H&L) (RABBIT) Antibody 1:3,000 for 60 min at RT. Secondary antibody: Anti-Rabbit IgG (GOAT) Peroxidase Conjugated Antibody 1:40,000 in MB-070 for 30 min at RT. Predicted/Obsevered Size: 25 and 72 kDa for Chicken IgG, 25 kDa for F(c) and F(ab). Chicken F(c) migrates slightly higher.

Anti-Chicken IgG (H&L) Secondary Antibody - Background

Anti-Chicken IgG antibody generated in rabbit detects specifically chicken IgG. This secondary antibody anti-Chicken is ideal for investigators who routinely perform ELISA, Sandwich ELISA, titration assays, western-blot, immunoprecipitation and more generally immunoassays.